



## Installing SafetyPro in Windows 7

Windows 7 introduced many changes to the way printer drivers are installed. One notable difference is the lack of the "Add Hardware Wizard." Hardware that is not installed automatically, for any reason, will appear in the "Devices and Printers" section as an "Unspecified" device. This guide will help you install your SafetyPro printer driver in such a case.

If you prefer, we offer lifetime free technical support for your SafetyPro printer. Please contact us at 877-762-9280 to be walked through the steps below, and for all other questions.

Figure 1. When powering on the SafetyPro, you'll see:

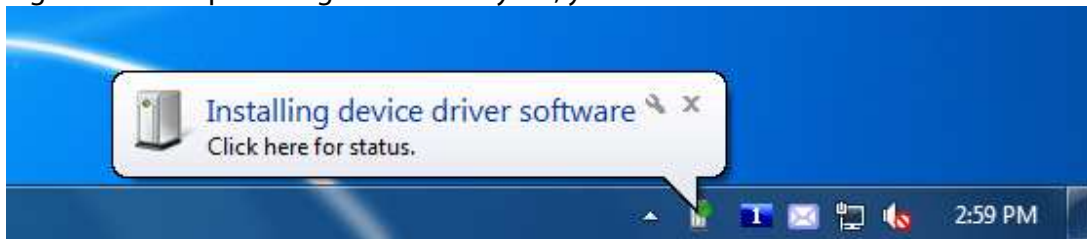
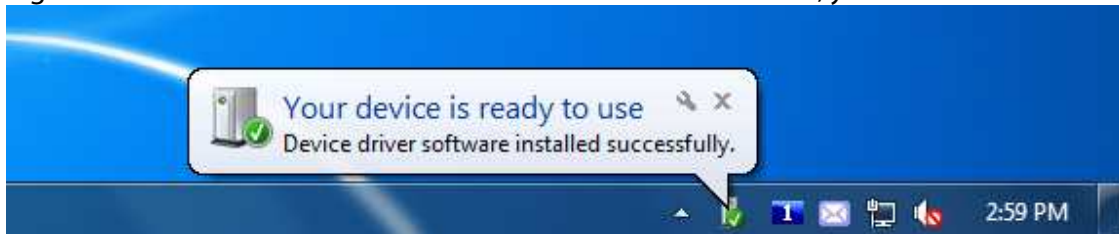


Figure 2. If Windows finds the software on the CD or hard drive, you will see:



## IF WINDOWS DOES NOT FIND THE SOFTWARE

NOTE: This is the manual method. It looks complicated, but you are protected by the Windows 7 systems that will only allow you to complete the task with the right drivers and steps.

Figure 3: Notification that the install failed

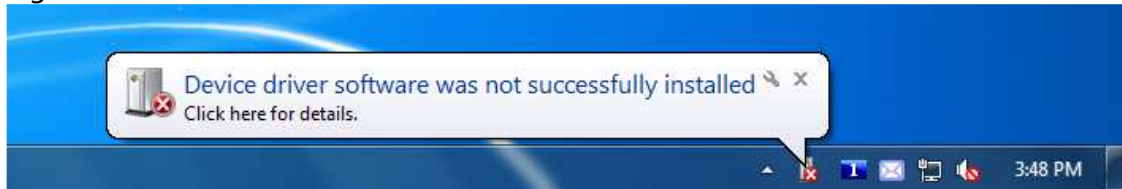
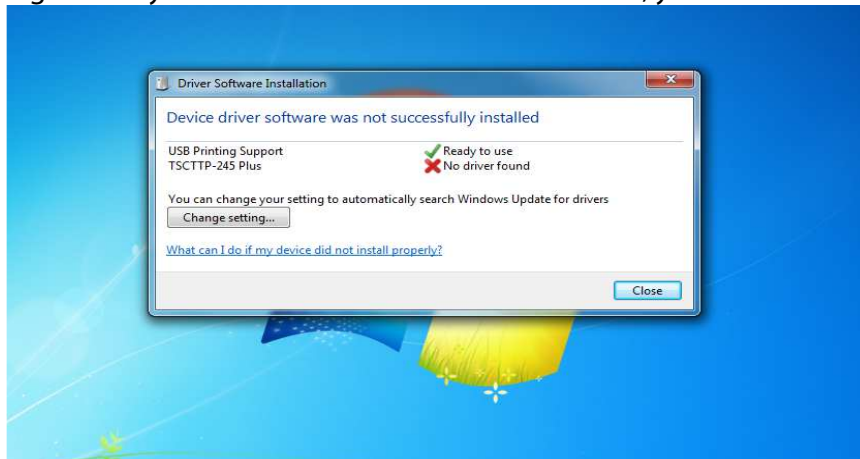


Figure 4: If you click on the notification for details, you see:



NEXT CLICK ON "Start" then "Devices and Printers"

Figure 5: Notice the "Unknown Device" this is the SafetyPro

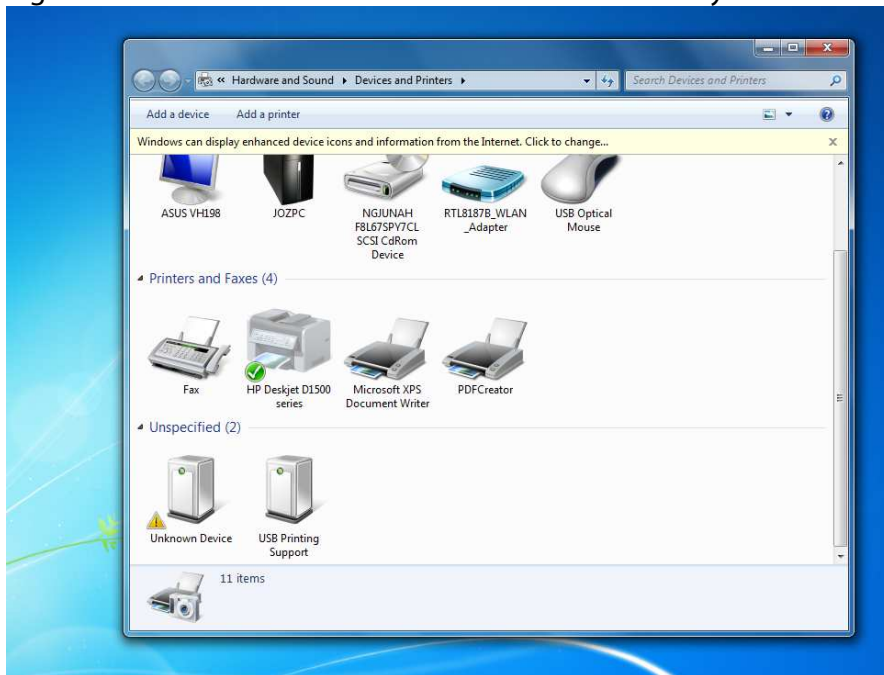


Figure 6: Right-click on the unknown device and choose "Properties", hardware tab

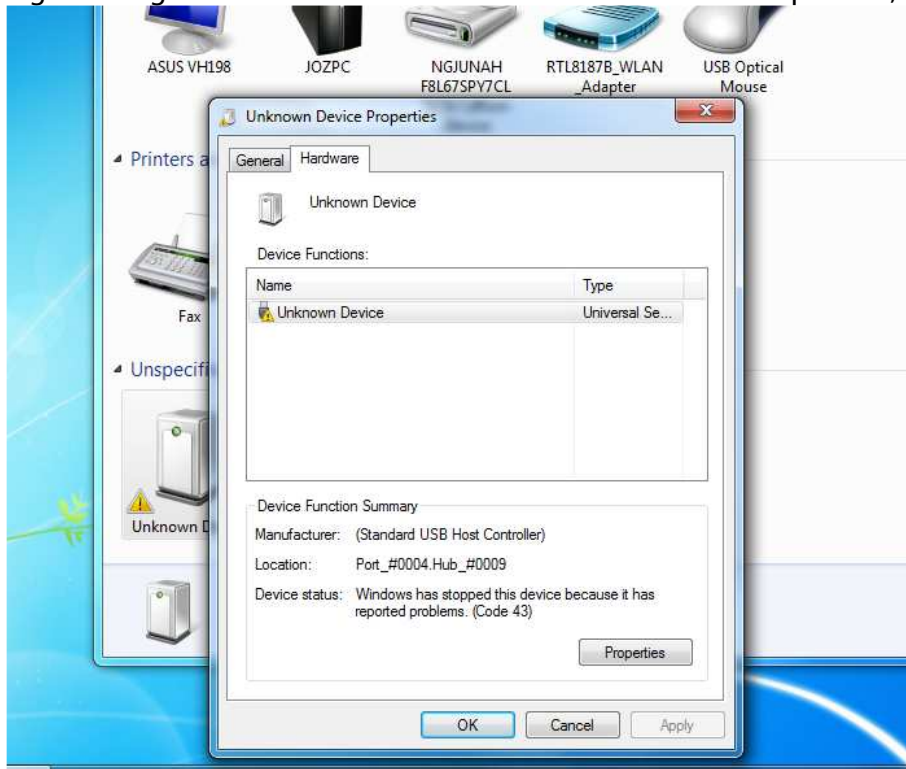


Figure 7: Click "Properties" button

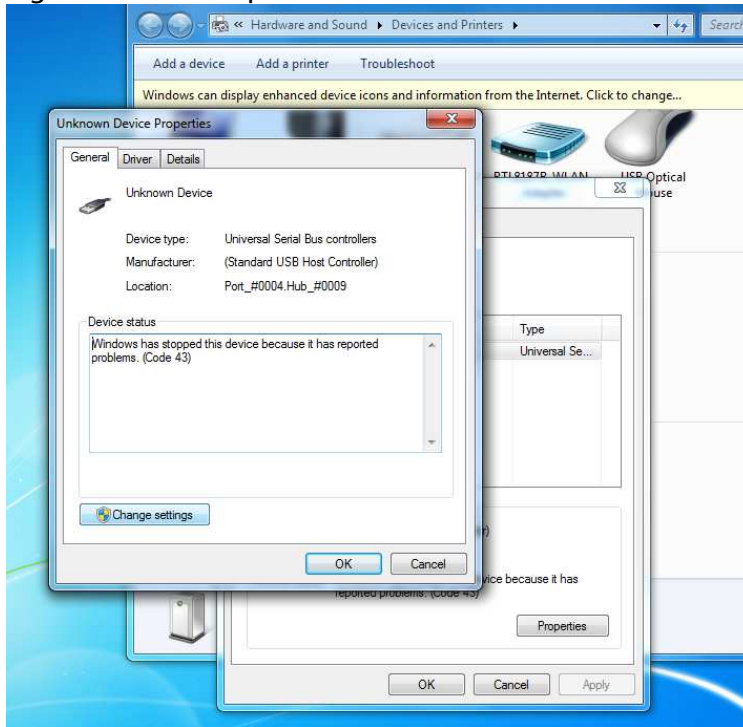


Figure 8: Click "Change Settings" button, driver tab

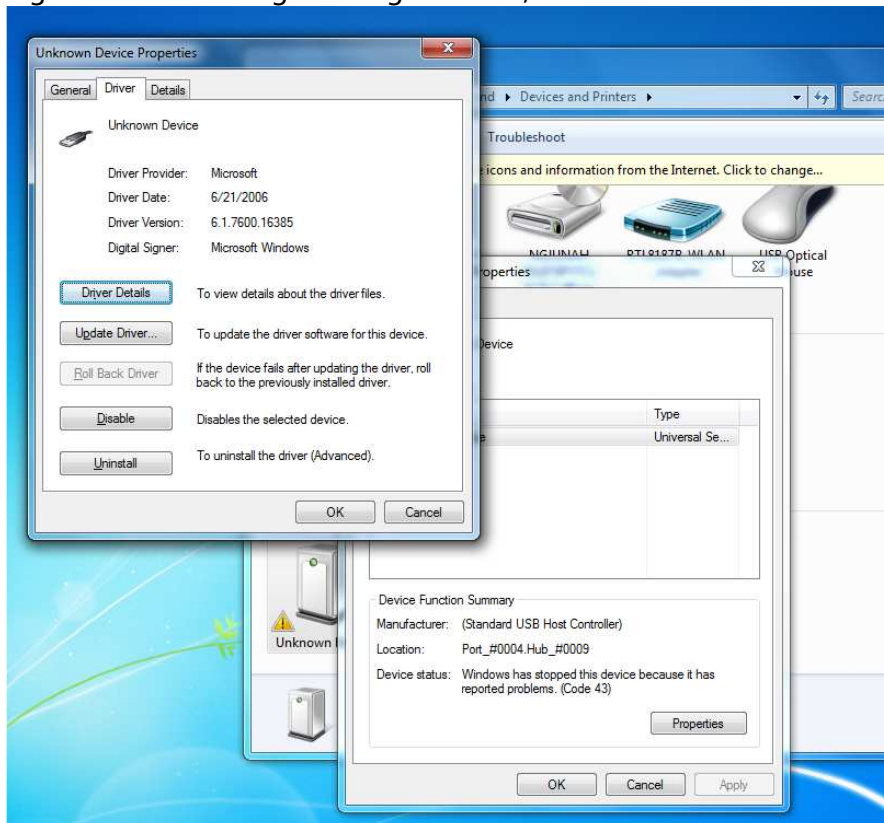
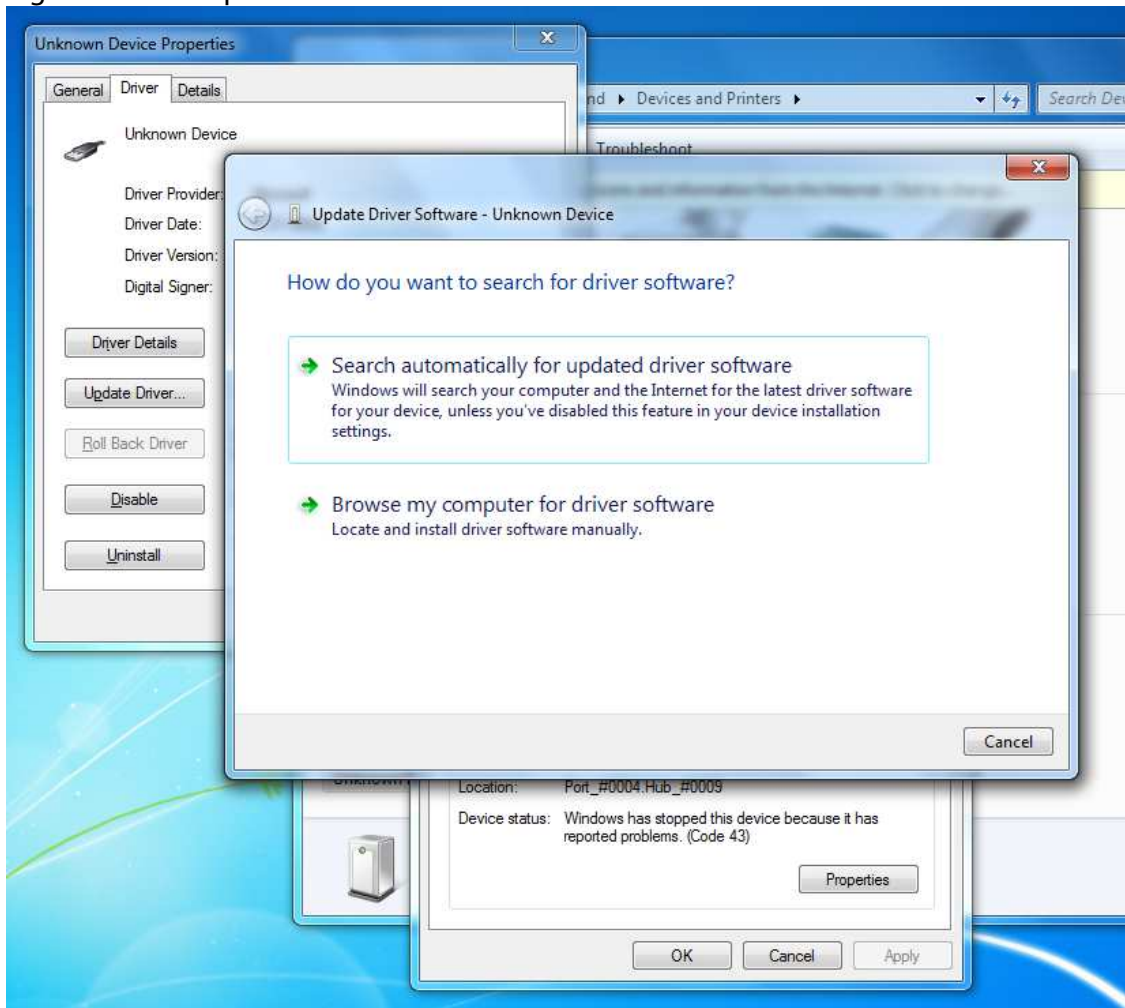


Figure 9: Click "Update Driver"



NOTE: At this point if you have the CD in or have installed the online driver file, you should be able to "Search" and install automatically. If not, you may "Browse" to the driver on the CD, or Local C: drive, under the SafetyPro Driver folder as follows: C:\SafetyPro Driver

Figure 10: Warning about "verified software" from Microsoft

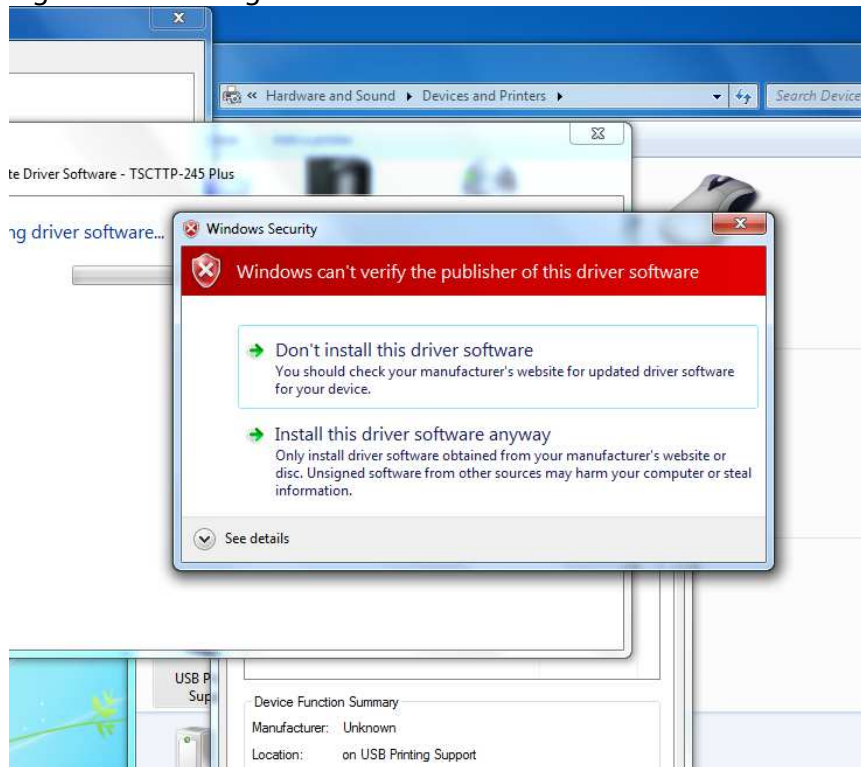


Figure 11: Install completed successfully

